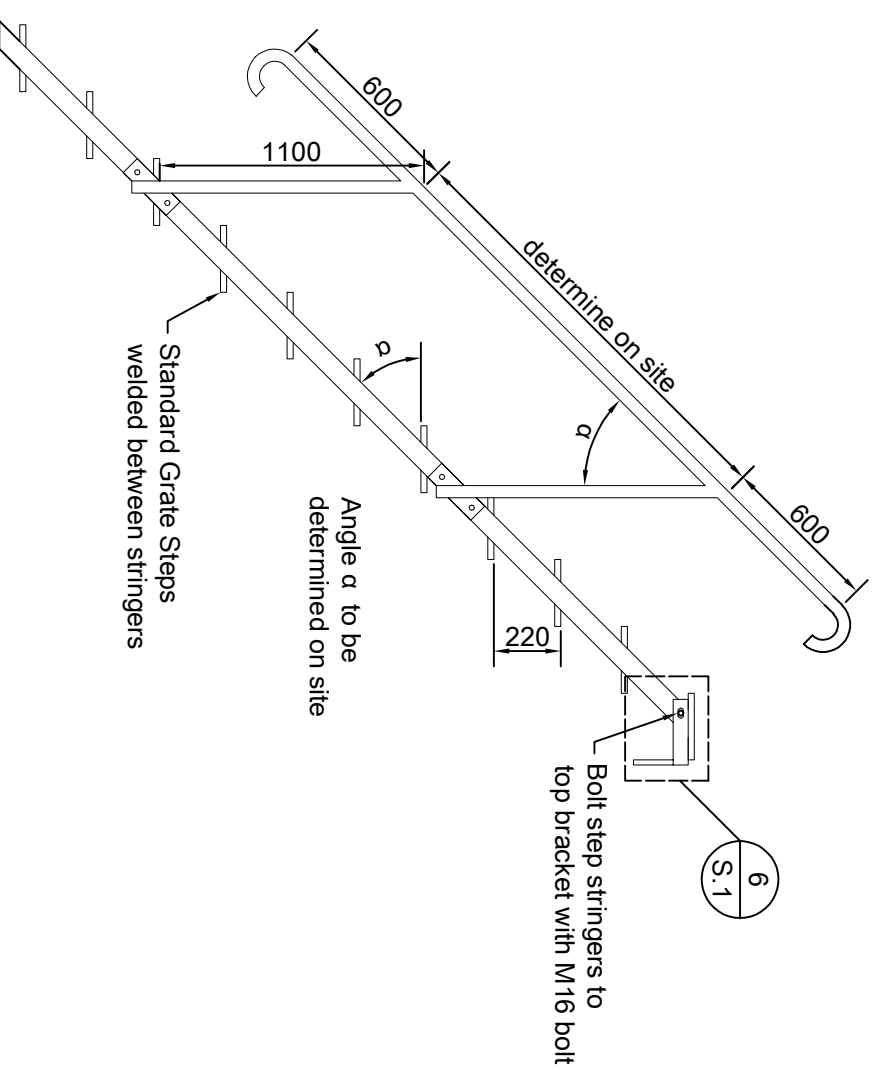
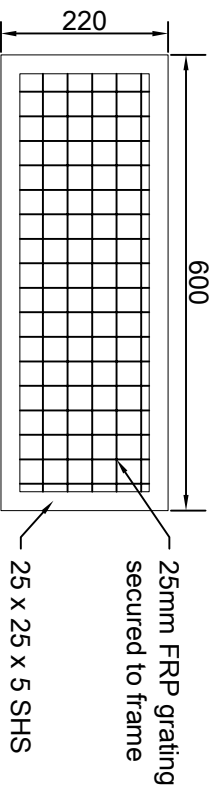


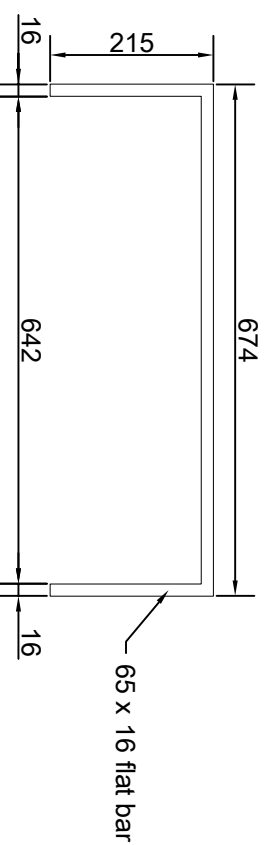
1 Egress Front View



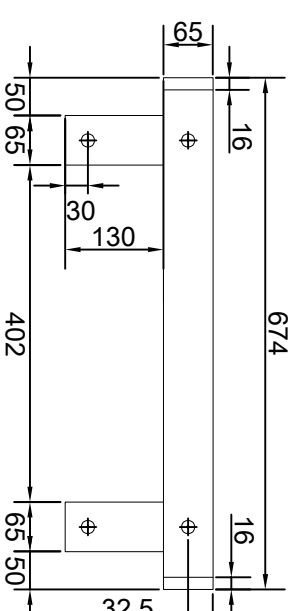
2 Egress Side View



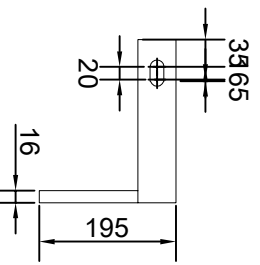
3 Standard Grate Step



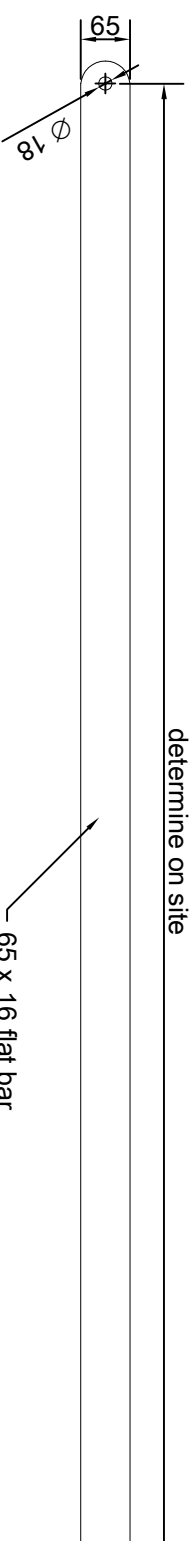
4 Top Bracket Plan View



5 Top Bracket Elevation



6 Top Bracket Side View



7 Egress Step Stringer

- NOTES**
1. Read notes on all sheets together with specifications and notify engineer immediately of any discrepancies.
 2. All dimensions in mm
 3. Structural steel grade 300
 4. all welded connections shall be of GP grade metal arc and comply with AS1554: Part 1.
 5. Butt welds shall be full penetration, using backing plates as required.
 6. Welding of hollow sections shall incorporate internal sections or backing plates as necessary to complete the specified weld
 7. All fillet welds to be as shown, else 6mm, or thickness of element if smaller. welds are all-round to avoid moisture trap.
 8. Handrail elements to be 40mm S40 seamless line pipe.
 9. All structural steel elements shall be HDG500 hot dipped galvanised to AS/NZS4680.
 10. All bolts/threaded rods hot-dip galvanised.

Rev	Description	Approved	Date
0	Construction Issue	A Morphet	29/1/19



Standard Drawings

Egress Steps

Date	Drawn	Checked	REV
29 November 2019	A McCaughan	M Farrell	0
Drawing Number			WRC - 1691
Scale:			As indicated

@ A3