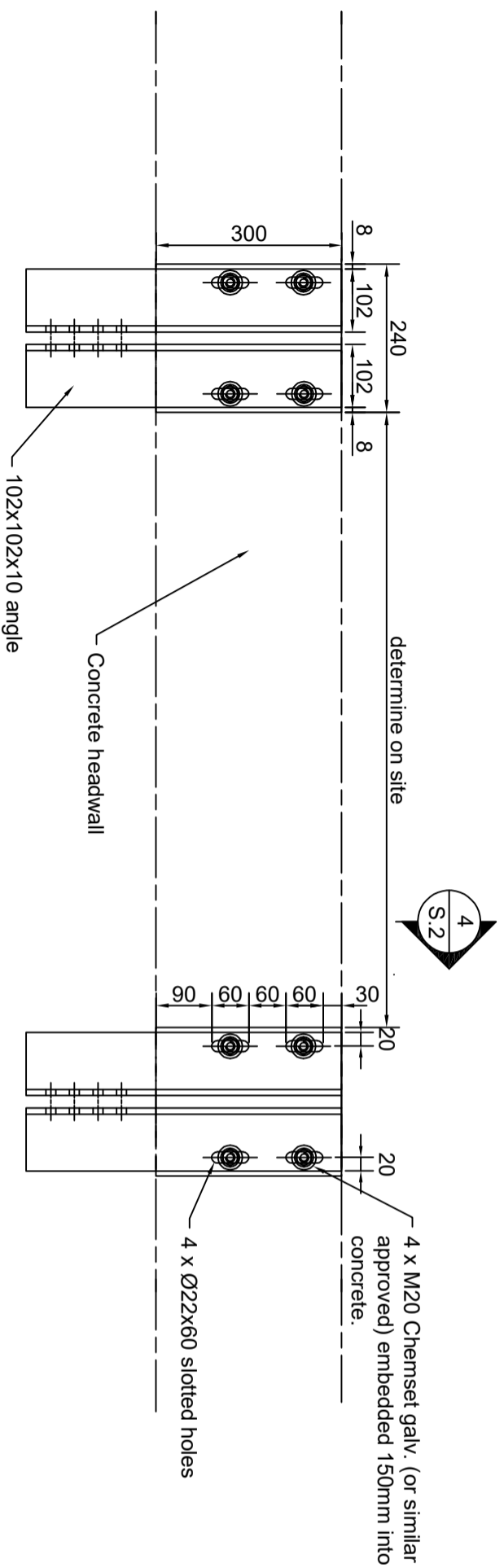
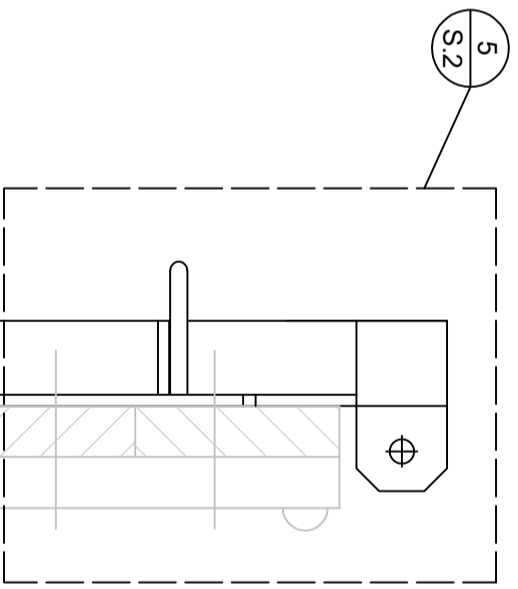


1 Flapgate Lifting Assembly Elevation



2 Flapgate Lifting Assembly Plan



3 Section

- NOTES**
- All dimensions in millimeters unless otherwise specified.
  - Contractor to confirm dimensions prior to fabrication.
  - A suitable electrode with a minimum tensile strength of 410 MPa to be used for all welding. Sealing welds are to be made on all unwelded seams.
  - Remove all burrs, sharp edges and weld slag and spatter when fabrication is complete and prior to galvanising.
  - All fabricated sheet components are to be hot dip galvanised.
  - All bolts, washers and nuts to be 304 Stainless Steel.
  - The hanger bar length is to verified after completion of the headwall construction.
  - Component Specifications:  
**Winch:** Allquip BHW-2600 S/S with auto brake.  
**Chain:** 6mm regular link galvanised.  
**Pulley:** S/S open pulley with pin.  
**Rubber Seal:** Skellerup flood gate rubber seal Code PKA069

0 Construction Issue		A Morphet		29/11/19	
Rev	Description	Approved	Date		



**Waikato**  
REGIONAL COUNCIL  
Te Kaunihiera ā Rohe o Waikato

**Standard Drawings**  
**Flapgate**  
**Lifting Mechanism**

Date:	29 November 2019	Drawn:	A McCaughan
Drawing Number:	WRC - 1693	Checked:	M Farrell
Scale:	S:1	REV	0

As indicated @ A3