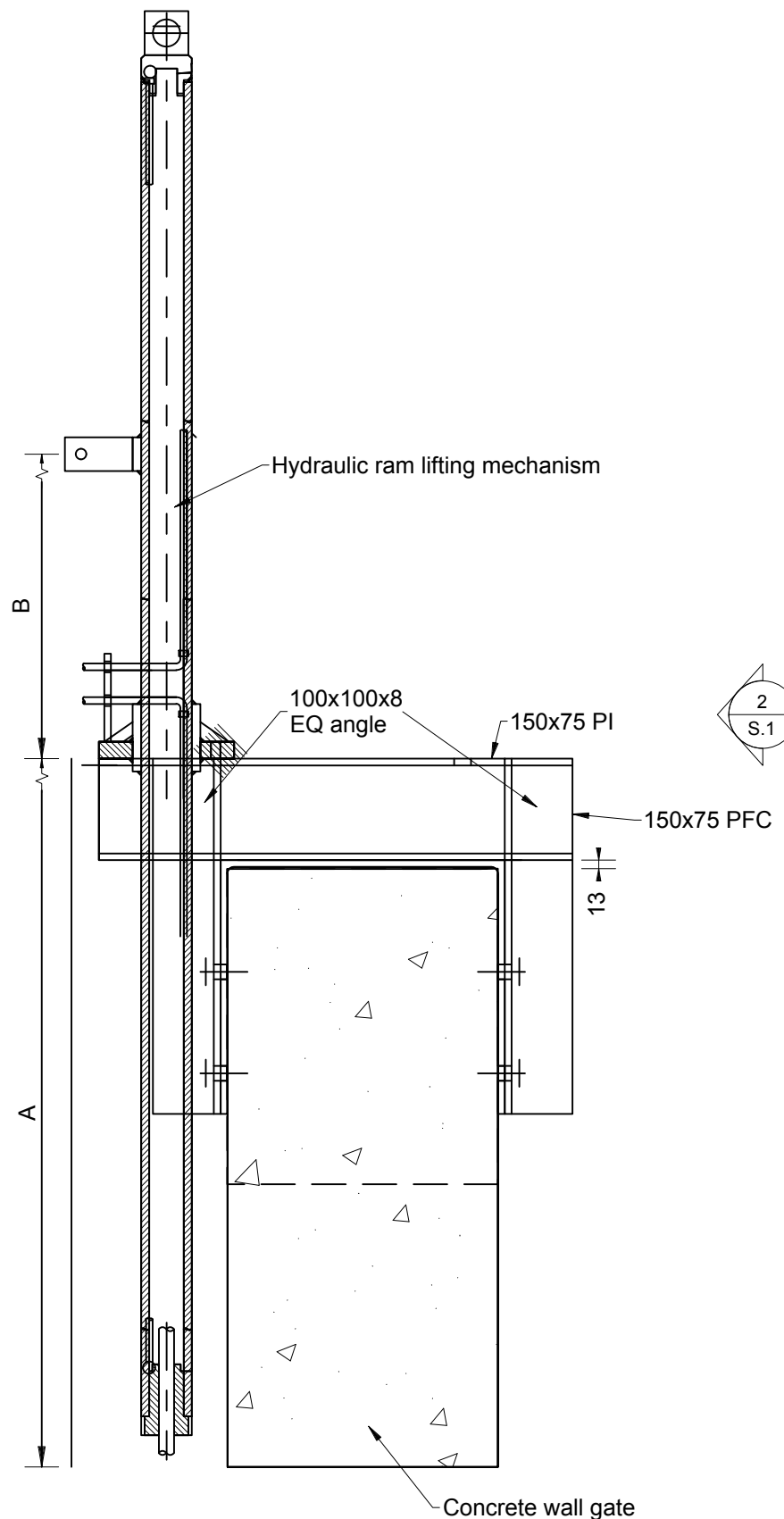
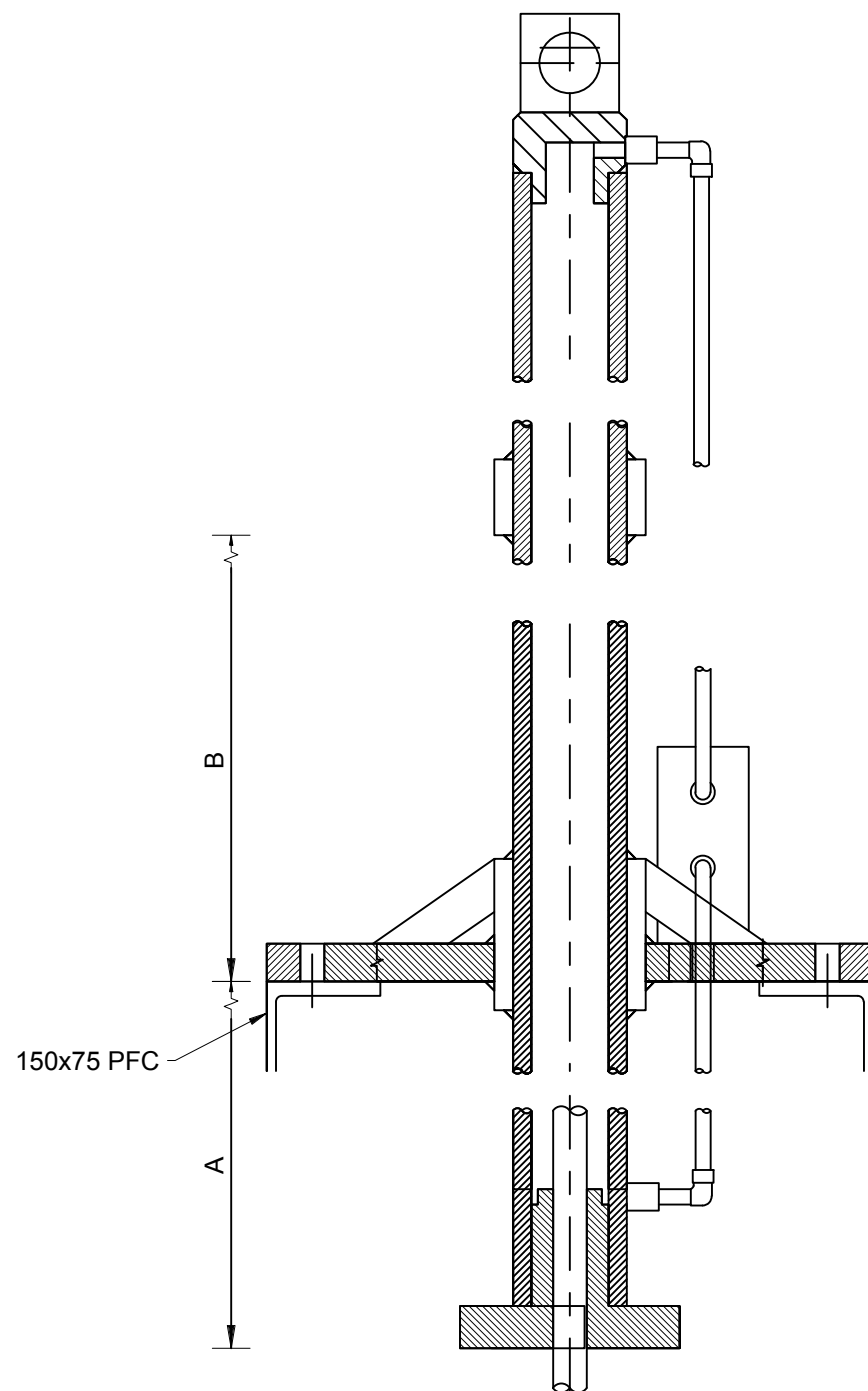


NOTES

1. All dimensions are in millimetres unless otherwise shown.
2. Particular care is to be taken to ensure that all welds are compatible with the materials being joined.
3. Remove all burrs, sharp edges, weld slag and spatter after fabrication.
4. Dimension 'A' is to be approximately 1200mm but subject to site measure with ram down before welding support frame to 3" tube
5. Dimension 'B' to be 480mm.
7. Flapgate suitable for outlet diameter >1m and head >4m



**1** Section  
1:10  
(Refer A70 - Diag. 8 & 14)



**2** Arrangement A  
1:5  
(Refer A70 - Diag. 9)

0	Construction Issue	A Morphet	29/11/19
Rev	Description	Approved	Date



Standard Drawings  
Sluice Gate  
(High Head)

Date. 29 November 2019	Drawn. A McCaughan	Checked. M Farrell	REV 0
Drawing Number WRC-1694	S.3		
Scale. As indicated			@ A3